

PART OF SW 1/4 OF NE 1/4
SECTION 20, T.6N., R.1W., S.L.B. & M.

114-2

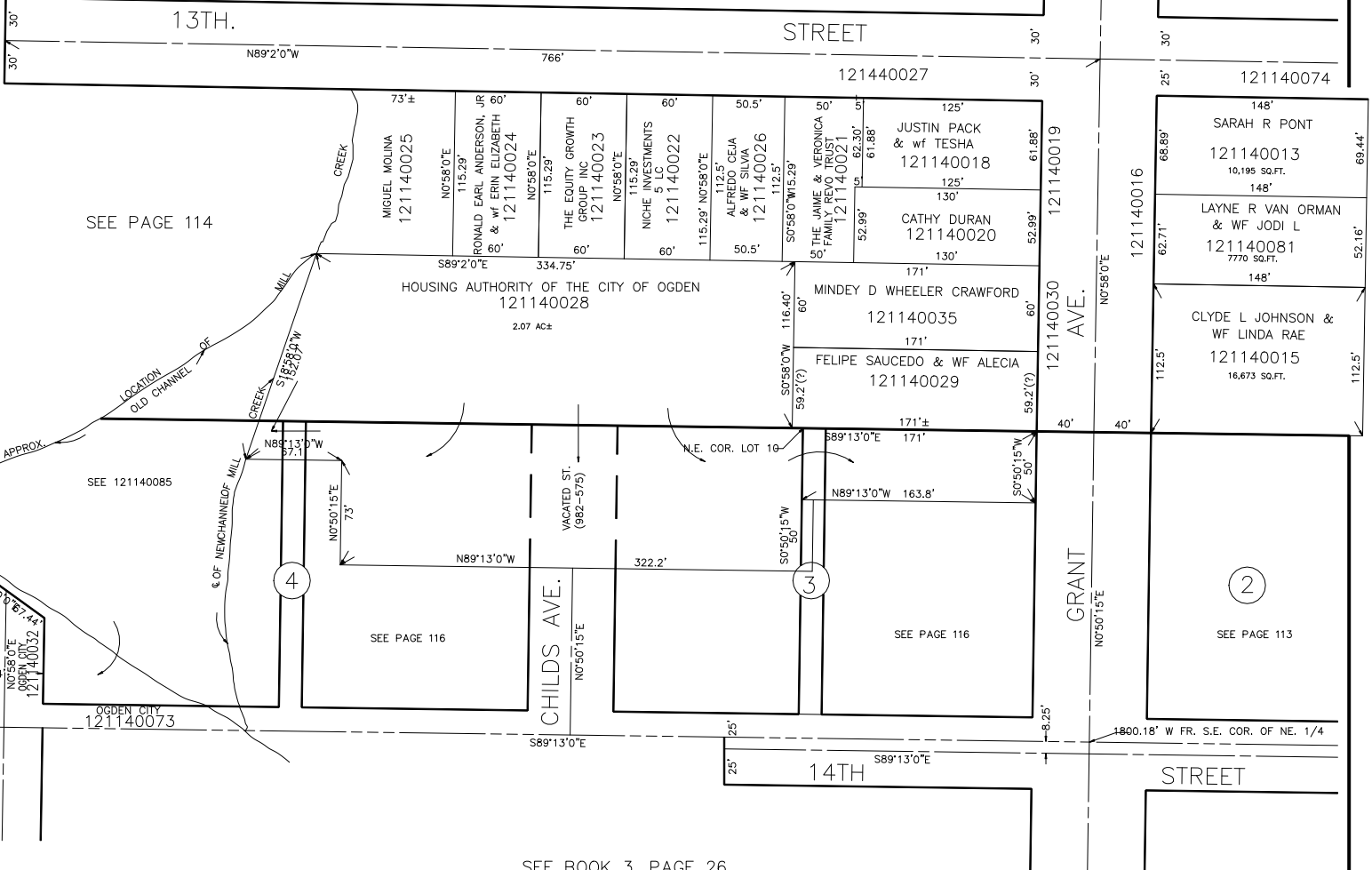
PAGE 115 OMITTED

IN OGDEN CITY
SCALE 1" = 60'

TAXING UNIT: 25

SEE PAGE 114-1

SEE PAGE 112



SEE PAGE 114

SEE 121140085

SEE PAGE 116

SEE PAGE 116

SEE PAGE 113

SEE BOOK 3, PAGE 26

SEE PAGE 110-2

LINCOLN AVE. S. 114.57' N 89° 10' 0" E 114.57' OGDEN CITY 121140032

114.57' N 89° 10' 0" E 114.57' OGDEN CITY 121140032

OGDEN CITY 121140073

S89°13'0"E

25'

14TH STREET

S89°13'0"E

8.25'

1800.18' W FR. S.E. COR. OF NE. 1/4

14TH STREET